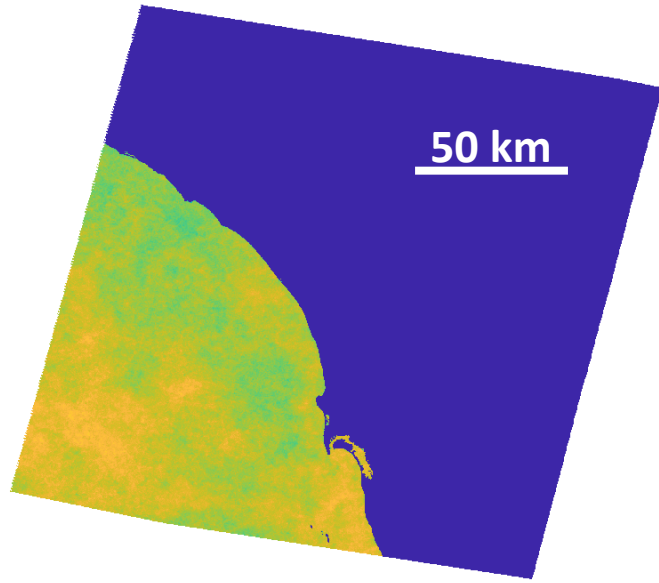
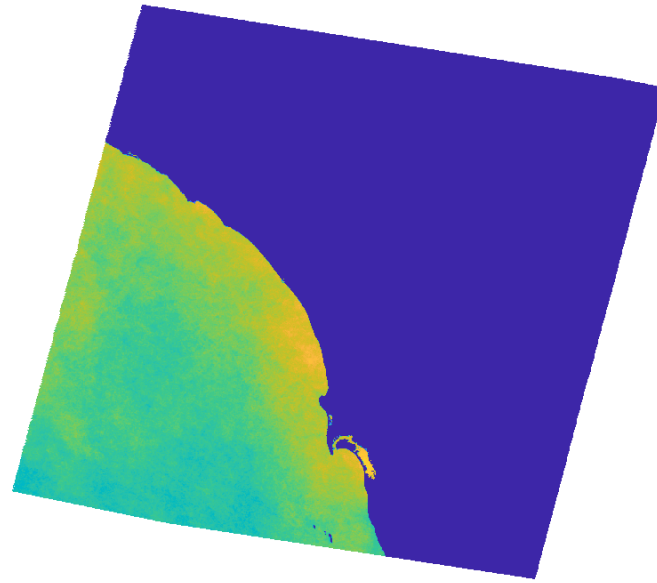


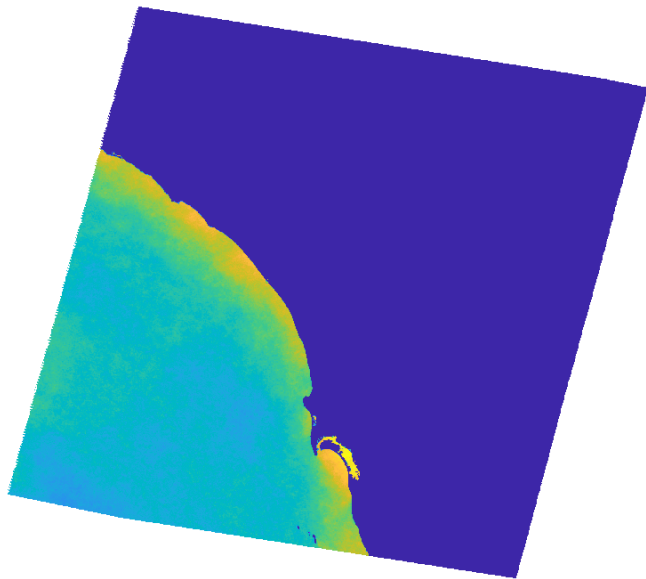
**Winter**



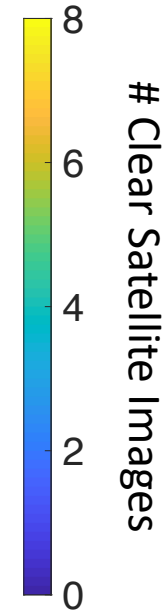
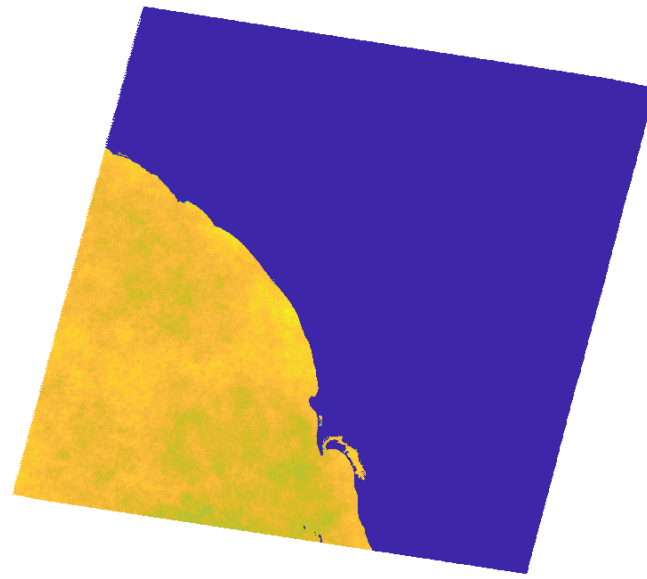
**Spring**



**Summer**



**Autumn**



**Figure 1.** Estimated number of clear satellite passes for each season for areas offshore of San Diego, CA USA. Calculation is based off a satellite pass every 8 days, the same schedule as two operating Landsat satellites. Probability of cloud cover was calculated from Landsat cloud masks for all Landsat images between 1982 – 2019. In the manuscript, this analysis will be extended for offshore areas along the entire CA coast and the estimated number of clear satellite passes will be calculated for several current and planned satellite missions.